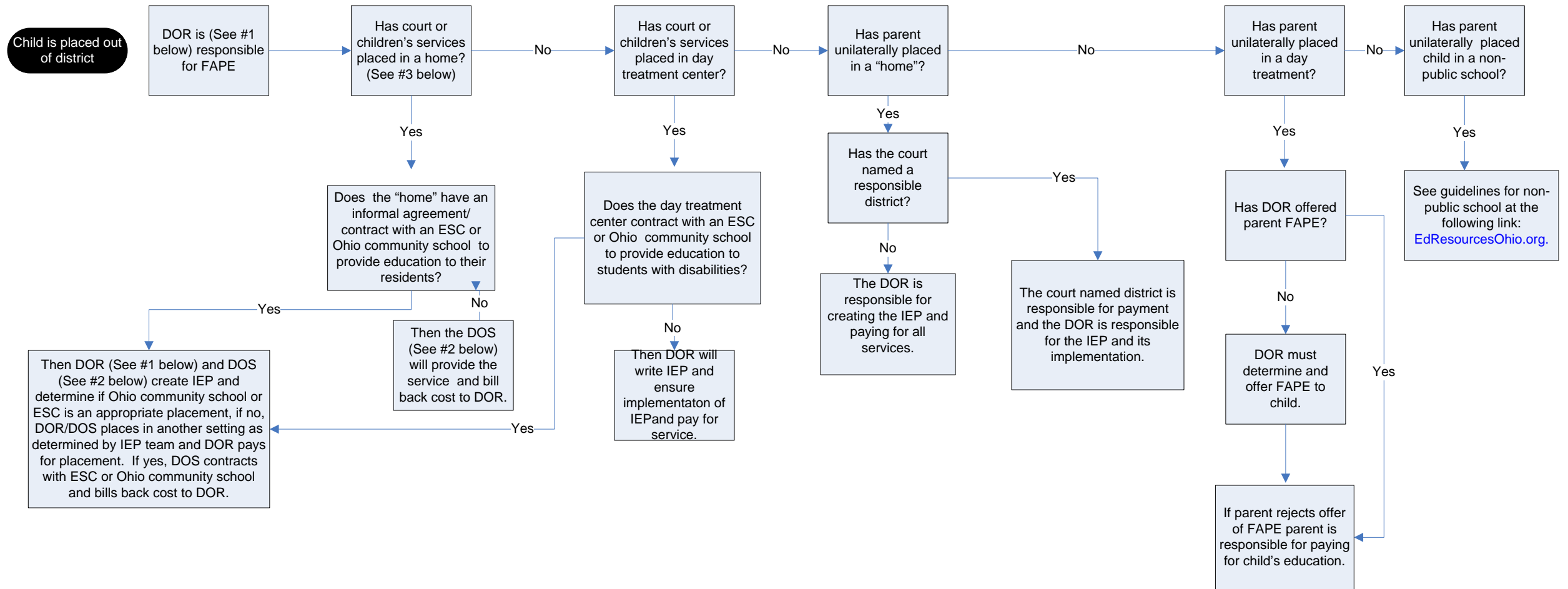


**PROVISION OF SERVICES FOR
SCHOOL AGE (5-21) CHILDREN WITH DISABILITIES
PLACED OUT OF DISTRICT**

February 11, 2010



KEY:

- #1 DOR = District of Residence – the district where the biological or adoptive parent resides or was last known to reside.**
- #2 DOS = District of Service – the district where the residential facility or day treatment center is located, if different from DOR.**
- #3 Home = Is a residential facility as defined in Ohio Revised Code 3313.64 (A)(4).**